



CARE RESEARCH, LLC



22 Acre Facility, Northern Colorado



# Recent FDA Audit

Conducted Aug 9<sup>th</sup> – 15<sup>th</sup>, 2012

No deficiencies found

No 483 Issued

Compliments on Documentation & Procedures



Main Building, Surgery (large animals), small animal facility

# Certifications

- USDA
- OLAW
- EU ETS123





# Outdoor Pastures - Large Farm Animals, Equine to Swine





Indoor Facilities - Large Swine & Poultry



# In-House Clinical Services

- Hematology, Clinical Chemistry
- Complete, detailed Histopathology

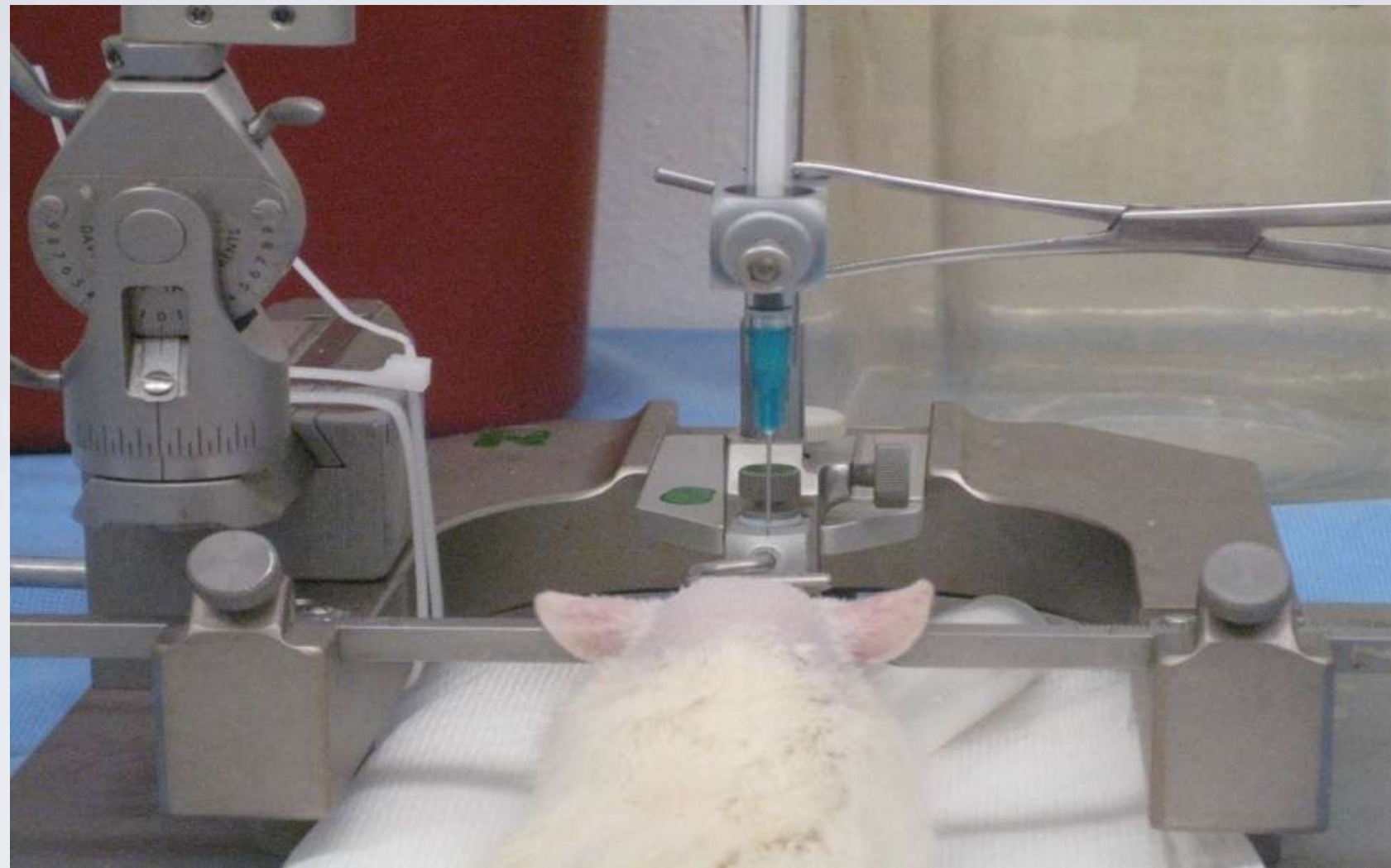


Modern, fully equipped veterinary surgical suite with C-ARM





# Metabolism & Special PK/TK, Including BBB with CSF & Infused Brain Collection



# Species of Focus (GLP & non-GLP)

## Small Animal:

Mice, rats, ferrets,  
rabbits, hamsters,  
guinea pigs

- Acute to chronic tox.
- Pharmacokinetic/Toxicokinetic models
- Reproductive/developmental toxicology
- Special models  
(arthritis, respiratory, in-vivo biocompatibility)





# Species of Focus (GLP & non-GLP)

Companion animals: Dogs and cats



- Acute to chronic tox.
- Pharmacokinetic/Toxico-kinetic models
- Surgical models
- Gait Analysis

# Species of Focus (GLP & non-GLP)

Livestock:

Porcine, Equine, Bovine,  
Ovine, Poultry



# Study Types

- Dermal sensitivity
- Acute/chronic tox.
- Pharmacokinetic
- Toxicokinetic models
- Surgical device development
- Feed/nutrition





# Poultry Studies



# Staff & Training





# Sister Company: Colorado Histo- Prep



# Colorado Histo-Prep, Fort Collins, CO





# Colorado Histo-Prep Foci

- **Histopathology (Anatomic Pathology)**
  - Dermal irritation/wound healing testing
  - Implants/Tuberculosis/Arthritis
  - Ophthalmic/
  - Inflammation (Rodent Intestinal Models)
  - Fish (Whirling Disease)
- **Hematology**
  - CBC/Coagulation Testing
  - CLIA Certification
- **Clinical Chemistry including Eliza**
- **Tissue/Block/Slide Archiving**



Tissue  
Processing





Histology



Clinical  
Chemistry





Hematology



Digital Micrography



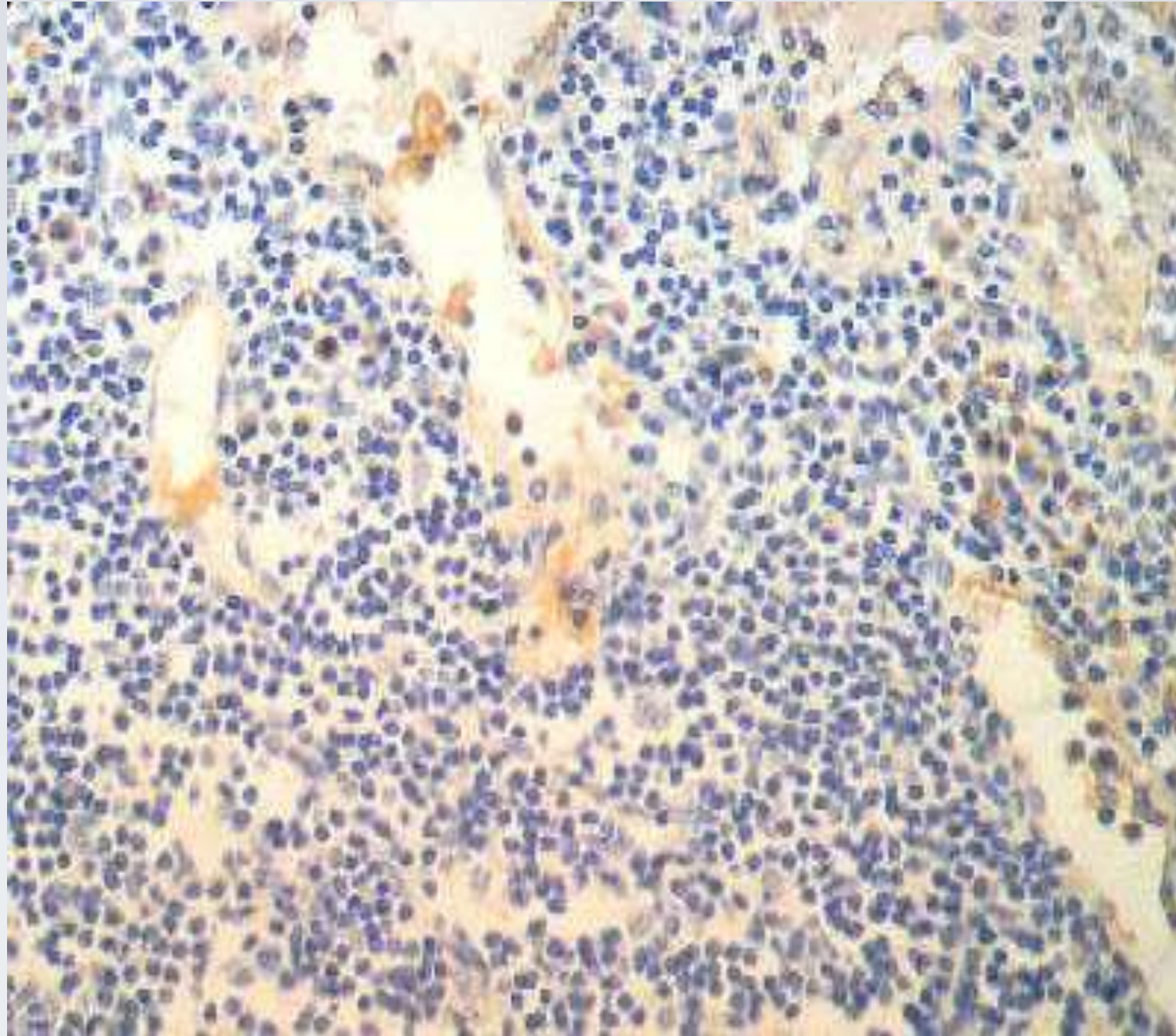
# Special Stains



Grocott's Methenamine-Silver

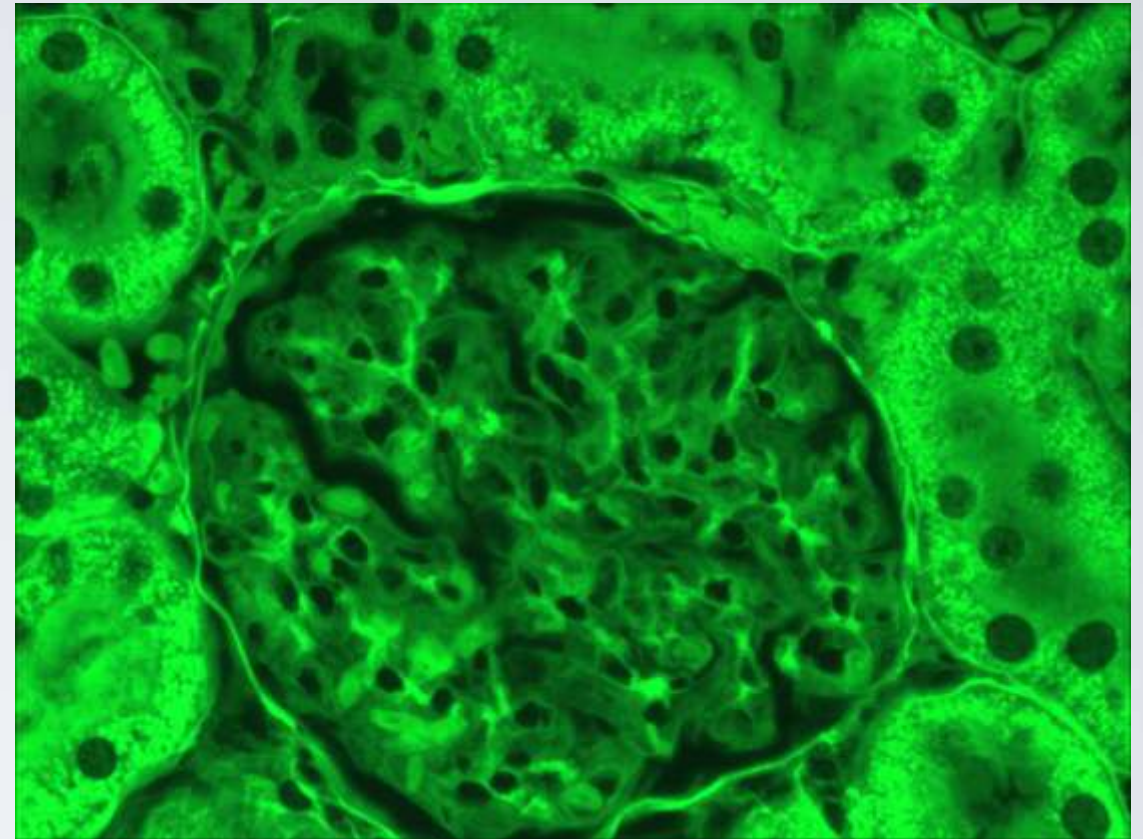
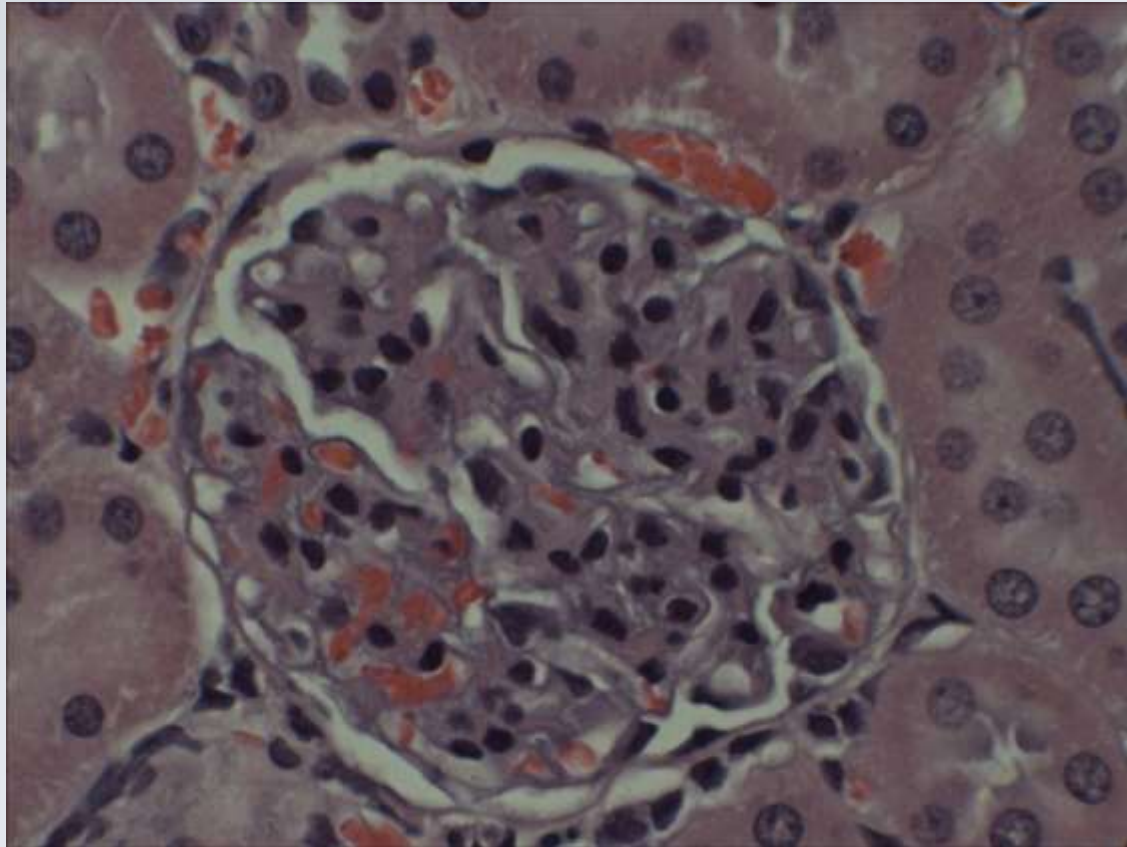


# Immunohistochemistry





# Fluorescence



Nephron



## Contact

Rajan S. Bawa

Chief Technology Officer

Phone: (970) 493-2660

[rbawa@careresearchllc.com](mailto:rbawa@careresearchllc.com)